



BMW_{LAB} OAI Project Team

NB-IoT Layer2 Design based on OAI



Advisor : Cheng, Ray-Guang

Student : Nick Ho

Date : 2017/02

Outline

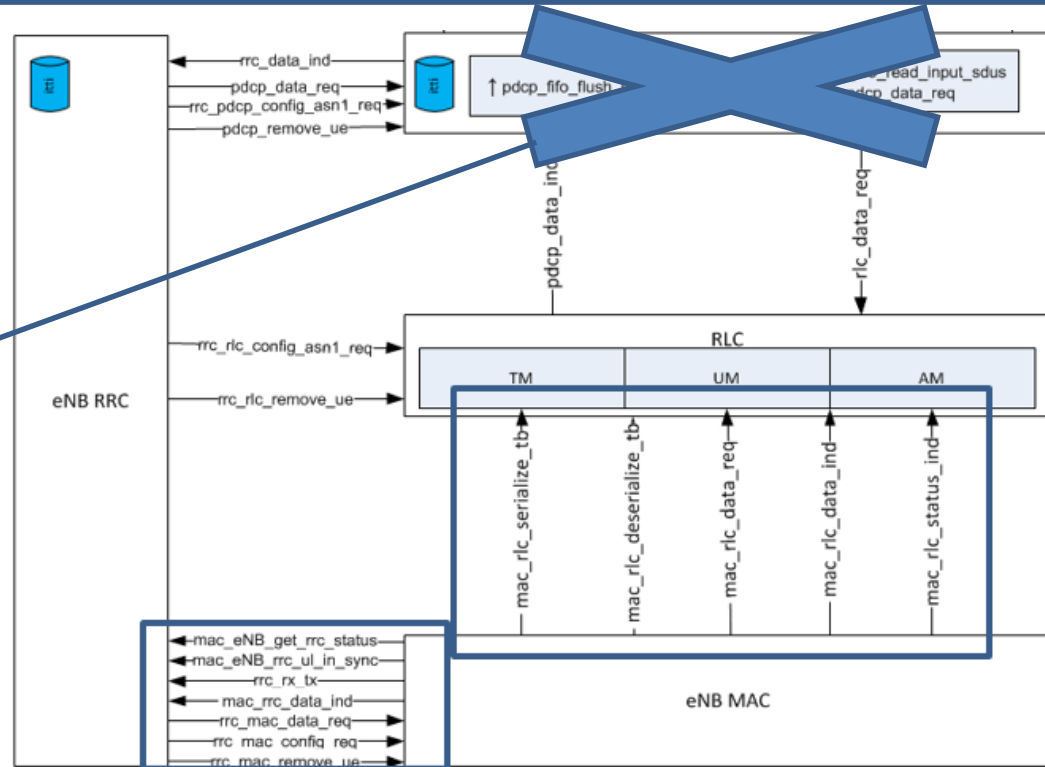
- ➡ eNB Layer 2 Interface for NB-IoT
 - MAC-RLC
 - MAC-RRC
- ➡ eNB MAC-PHY Interface
 - Random Access
 - Phy Config
 - Scheduling
 - Helper Function
 - Event
- ➡ Protocol for NB-IoT based on OAI
 - Protocol stack (LTE vs NB-IoT)
 - Packet structure
 - Downlink Packet Transfer
 - Uplink Packet Transfer
 - OAI MAC scheduler
- ➡ MAC System Overview & Modification Phase
 - System MAC
 - Partition OAI module & Primitives
 - Partition MAC Module in detail
 - Modification Phase from OAI to NB-IoT



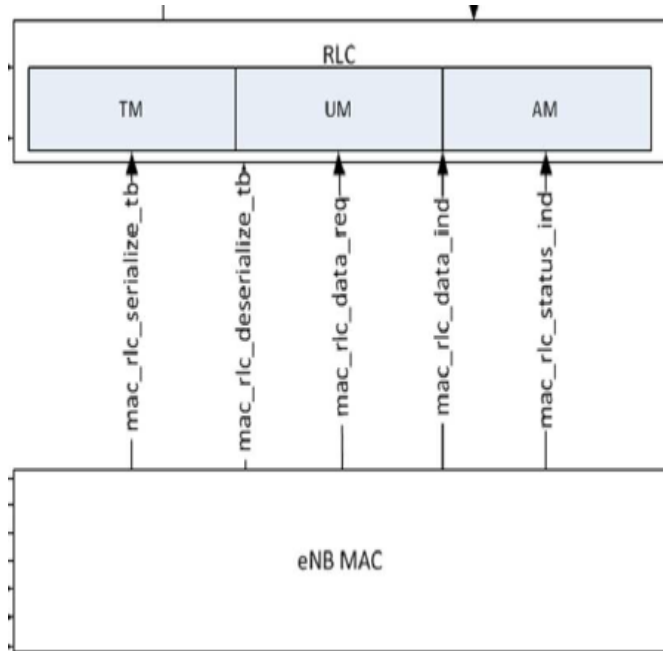
eNB layer 2 interface for NB-IoT

- Openair2/RRC/LITE
- Openair2/LAYER2/
 - MAC
 - RLC
 - PDCP

PDCP have no use
for NB-IoT Control
plane solution.

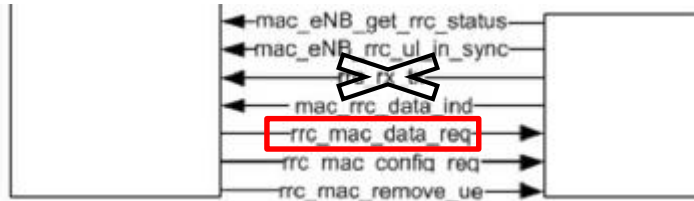


MAC-RLC



- ➔ **mac_rlc_serialize_tb:**
 - Serialize a list of Transport blocks
- ➔ **mac_rlc_deserialize_tb:**
 - deserialize a list of Transport blocks
- ➔ **mac_rlc_data_req:**
 - Delivery RLC data to MAC
- ➔ **mac_rlc_data_ind:**
 - Map data indication to the RLC corresponding to the radio bearer
- ➔ **mac_rlc_status_ind:**
 - Request and set the number of bytes scheduled for transmission by RLC

MAC-RRC



- ➔ **mac_eNB_get_rrc_status**
 - MAC get status of UE from RRC
- ➔ **mac_eNB_rrc_ul_in_sync**
 - Brief Function to remove UE when radio link failure.
- ➔ **mac_rrc_data_ind**
 - RRC receive data from different logical channel (MCCH BCCH CCCH).
- ➔ **mac_rrc_data_req**
 - For MCCH, CCCH, BCCH data delivery
- ➔ **rrc_mac_config_req**
 - brief RRC Configuration primitive for PHY/MAC. Allows configuration of PHY/MAC resources based on System Information (SI), RRCConnectionSetup and RRCConnectionReconfiguration messages
- ➔ **rrc_mac_remove_ue**
 - Check if uplink failure in scheduler procedure
 - In NB-IoT, still need check if UL fail during scheduling procedure.

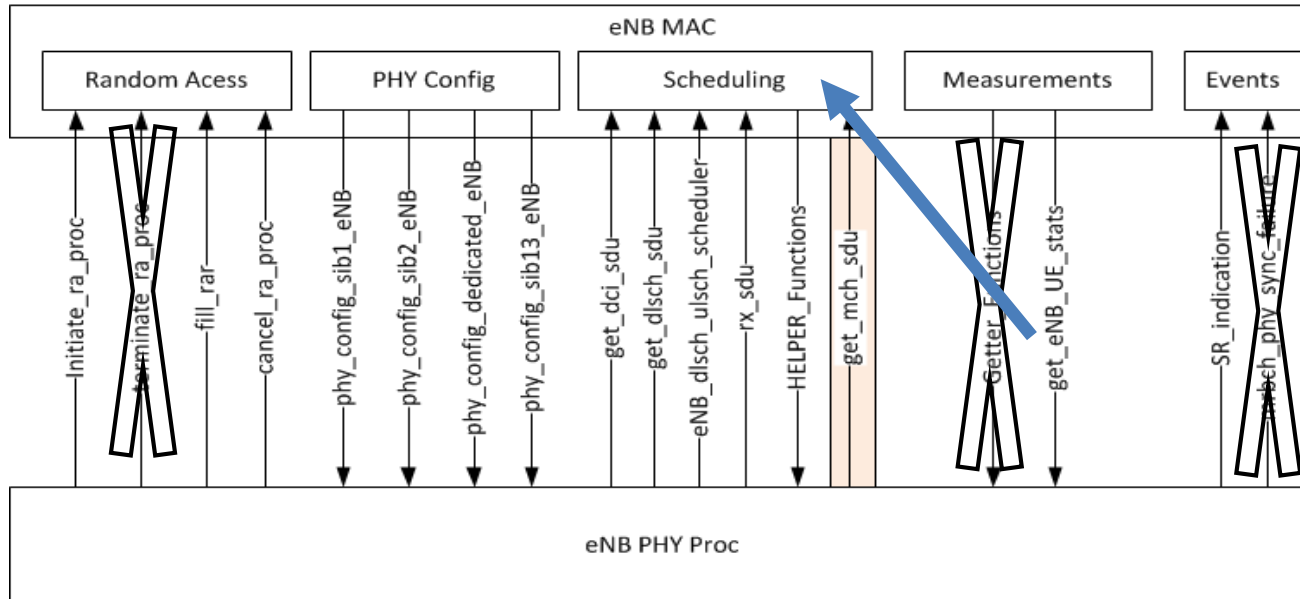
Outline

- ➡ eNB Layer 2 Interface for NB-IoT
 - MAC-RLC
 - MAC-RRC
- ➡ eNB MAC-PHY Interface
 - Random Access
 - Phy Config
 - Scheduling
 - Helper Function
 - Event
- ➡ Protocol for NB-IoT based on OAI
 - Protocol stack (LTE vs NB-IoT)
 - Packet structure
 - Downlink Packet Transfer
 - Uplink Packet Transfer
 - OAI MAC scheduler
- ➡ MAC System Overview & Modification Phase
 - System MAC
 - Partition OAI module & Primitives
 - Partition MAC Module in detail
 - Modification Phase from OAI to NB-IoT

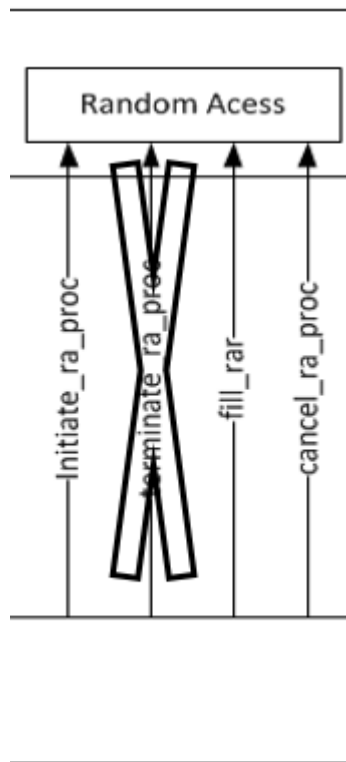
eNB MAC-PHY interface

➔ Top level function

– Openair2/PHY_INTERFACE/defs.h



Random Access



➔ **[Modify]** Initiate_ra_proc:

- Function to indicate a received preamble on PRACH. It initiates the RA procedure.
- The preamble format has changed, and use the time and frequency domain to indicate the preamble.

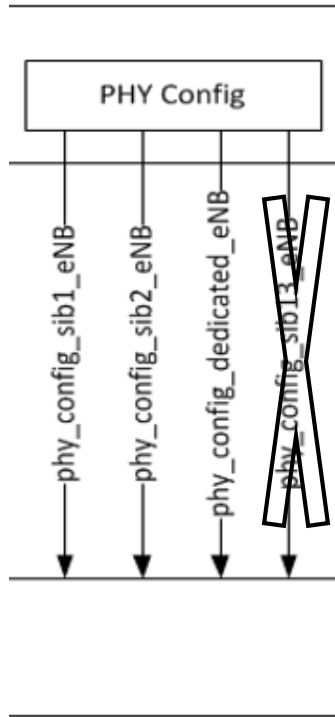
➔ **[Modify]** fill_rar:

- Function in eNB to fill RAR pdu when requested by PHY. This provides a single RAR SDU for the moment and returns the t-CRNTI.
- The field of DCI for RAR and the RAR grant for MSG3 has changed.

➔ **[Re-use]** cancel_ra_proc:

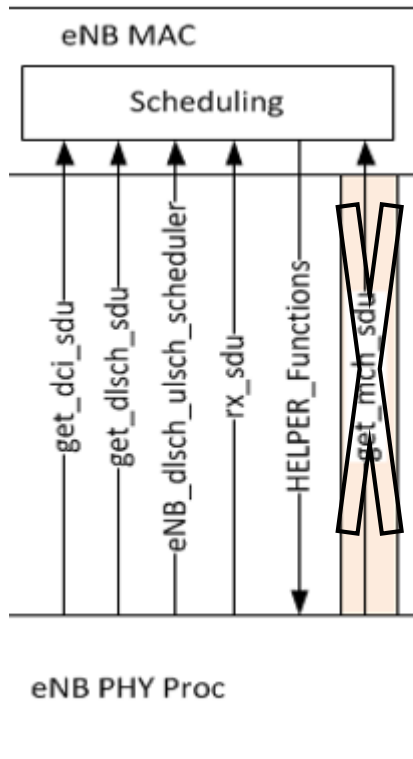
- Function to indicate a failed RA response. It removes all temporary variables related to the initial connection of a UE.

PHY Config



- ➔ **[Modify]**Phy_config_sib1_eNB:
 - SI window size & SI period
- ➔ **[Modify]**Phy_config_sib2_eNB:
 - Configuration of most frame parameters & channel
- ➔ **[Modify]**Phy_config_dedicated_eNB:
 - Configure PHY_VARS_eNB with components of physicalConfigDedicated

Scheduling



➔ [Re-use]get_dci_sdu:

- retrieve result of scheduling (DCI) in current subframe. Can be called an arbitrary number of times after eNB_dlsch_ulsch_scheduler.

➔ [Re-use]get_dlsch_sdu:

- PHY get downlink data from MAC layer.

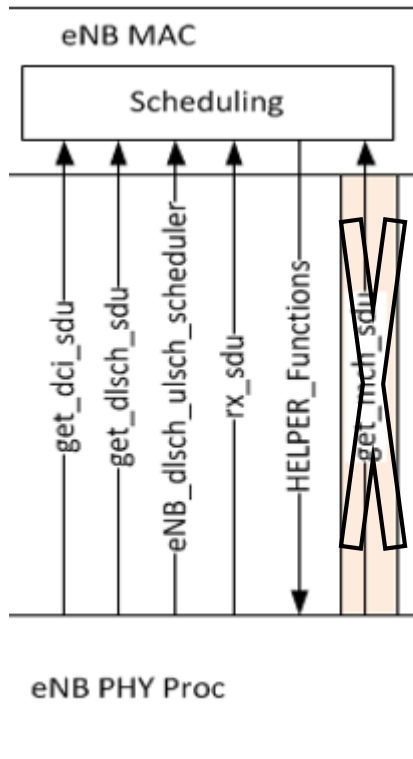
➔ [Re-use]eNB_dlsch_ulsch_scheduler:

- Function to trigger the eNB scheduling procedure.

➔ [Re-use]rx_sdu:

- MAC get Uplink data from PHY layer.

HELPER Function



➔ HELPER Function:

- All the primitives for helping scheduling(Ex: get_TBS_UL)



HELPER Function

➔ PHY Helper Function

- computeRIV
- get_TBS_DL
- get_TBS_UL
- get_ue_active_harq_pid
- get_nCCE_max
- get_nCCE_offset
- get_nb_rb
- get_prb
- get_transmission_mode
- get_rballo

➔ MAC Helper Function

- get_eNB_UE_stats
- get_lte_frame_parms
- get_mu_mimo_mode:
- get_hundred_times_delta_TF:
- get_target_pusch_rx_power
- get_target_pucch_rx_power
- get_prach_prb_offset
- is_prach_subframe
- get_SB_size



PHY Helper Function

- ➔ **[Delete]**computeRIV
 - RIV computation from PHY
- ➔ **[Modify]**get_TBS_DL
 - Downlink TBS table lookup from PHY
- ➔ **[Modify]**get_TBS_UL
 - Uplink TBS table lookup from PHY
- ➔ **[Modify]**get_ue_active_harq_pid
 - Function to retrieve the HARQ round index for a particular UL/DLSCH and harq_pid

5.4.2 HARQ operation⁴⁾

5.4.2.1 HARQ entity⁴⁾

There is one HARQ entity at the MAC entity for each Serving Cell with configured uplink, which maintains a number of parallel HARQ processes allowing transmissions to take place continuously while waiting for the HARQ feedback on the successful or unsuccessful reception of previous transmissions.⁴⁾

The number of parallel HARQ processes per HARQ entity is specified in [2], clause 8. NB-IoT has one UL HARQ process.⁴⁾

Table 16.5.1.2-2: Transport block size (TBS) table for NPUSCH.⁴⁾

I_{TBS} ⁴⁾	I_{RU} ⁴⁾							
	0 ⁴⁾	1 ⁴⁾	2 ⁴⁾	3 ⁴⁾	4 ⁴⁾	5 ⁴⁾	6 ⁴⁾	7 ⁴⁾
0.	16.	32.	56.	88.	120.	152.	208.	256.
1.	24.	56.	88.	144.	176.	208.	256.	344.
2.	32.	72.	144.	176.	208.	256.	328.	424.
3.	40.	104.	176.	208.	256.	328.	440.	568.
4.	56.	120.	208.	256.	328.	408.	552.	680.
5.	72.	144.	224.	328.	424.	504.	680.	872.
6.	88.	176.	256.	392.	504.	600.	808.	1000.
7.	104.	224.	328.	472.	584.	712.	1000.	..
8.	120.	256.	392.	536.	680.	808.
9.	136.	296.	456.	616.	776.	936.
10.	144.	328.	504.	680.	872.	1000.
11.	176.	376.	584.	776.	1000.
12.	208.	440.	680.	1000.

Table 16.4.1.5.1-1: Transport block size (TBS) table.⁴⁾

I_{TBS} ⁴⁾	I_{SF} ⁴⁾							
	0 ⁴⁾	1 ⁴⁾	2 ⁴⁾	3 ⁴⁾	4 ⁴⁾	5 ⁴⁾	6 ⁴⁾	7 ⁴⁾
0.	16.	32.	56.	88.	120.	152.	208.	256.
1.	24.	56.	88.	144.	176.	208.	256.	344.
2.	32.	72.	144.	176.	208.	256.	328.	424.
3.	40.	104.	176.	208.	256.	328.	440.	568.
4.	56.	120.	208.	256.	328.	408.	552.	680.
5.	72.	144.	224.	328.	424.	504.	680.	..
6.	88.	176.	256.	392.	504.	600.
7.	104.	224.	328.	472.	584.	680.
8.	120.	256.	392.	536.	680.
9.	136.	296.	456.	616.
10.	144.	328.	504.	680.
11.	176.	376.	584.
12.	208.	440.	680.



PHY Helper Function

- ➔ **[Delete]**get_nCCE_max
 - Function to retrieve number of CCE
- ➔ **[Delete]**get_nCCE_offset
 - Function to retrieve offset number of CCE
- ➔ **[Delete]**get_nb_rb
 - Function to retrieve number of PRB in an rb_alloc
- ➔ **[Delete]**get_prb
 - Function to convert VRB to PRB for distributed allocation

PHY Helper Function

- ➔ **[Delete]**get_transmission_mode
 - Function to retrieve transmission mode for UE
- ➔ **[Delete]**get_rballocc
 - Function to retrieve rb_alloc bitmap from dci rballocc field and VRB type



MAC Helper Function

- ➔ **[Modify]**get_eNB_UE_stats
 - Function for MAC to get the UE stats from the PHY
 - Also used in NB-IoT because it need to get the UE stats from PHY
- ➔ **[Modify]**get_lte_frame_parms
 - get the frame parameters from the PHY
 - Not use in NB-IoT, it may need to design new primitives, like get_NB_frame_parm
- ➔ **[Delete]**get_mu_mimo_mode:
 - get the Multiuser mimo mode
 - Not use in OAI

MAC Helper Function

➔ **[Delete]**get_hundred_times_delta_TF:

- get the delta TF for Uplink Power Control Calculation
- Not use in OAI

➔ **[Re-use]**get_target_pusch_rx_power


- get target PUSCH received power(this is the normalized RX power and this should be constant regardless of mcs)
- Also used in NB-IoT because it need to know RX constant power in eNB PHY.

➔ **[Delete]**get_target_pucch_rx_power

- get target PUSCH received power
- Not use in NB-IoT

MAC Helper Function

- ➔ **[Delete]**get_prach_prb_offset:
 - Return PRACH frequency offset
- ➔ **[Delete]**is_prach_subframe:
 - Determine is PRACH subframe or not according table 5.7.1-2 from 36.211
- ➔ **[Delete]**get_SB_size
 - ICIC algos

i2_init  Function in Main.c (c:\users\...\mac) at line 432 (126 lines)

```

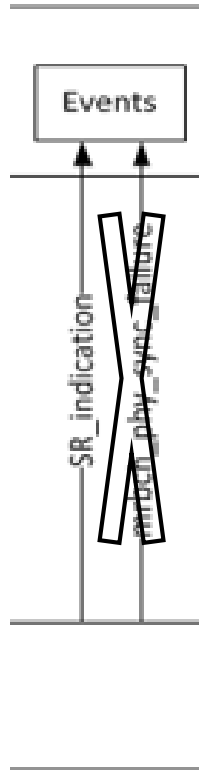
mac_xface->get_transmission_mode = get_transmission_mode;
mac_xface->get_rballoc           = get_rballoc;
mac_xface->get_nb_rb             = conv_nprb;
mac_xface->get_prb               = get_prb;
// mac_xface->get_SB_size         = Get_SB_size;
mac_xface->get_subframe_direction = get_subframe_direction;
mac_xface->Msg3_transmitted       = Msg3_tx;
    
```

EX: For preamble format 0-3

Table 5.7.1-2: Frame structure type 1 random access configuration for preamble formats 0-3

PRACH Configuration Index ^a	Preamble Format ^a	System frame number ^a	Subframe number ^a	PRACH Configuration Index ^a	Preamble Format ^a	System frame number ^a	Subframe number ^a
0 ^a	0 ^a	Even ^a	1 ^a	32 ^a	2 ^a	Even ^a	1 ^a
1 ^a	0 ^a	Even ^a	4 ^a	33 ^a	2 ^a	Even ^a	4 ^a
2 ^a	0 ^a	Even ^a	7 ^a	34 ^a	2 ^a	Even ^a	7 ^a
3 ^a	0 ^a	Any ^a	1 ^a	35 ^a	2 ^a	Any ^a	1 ^a
4 ^a	0 ^a	Any ^a	4 ^a	36 ^a	2 ^a	Any ^a	4 ^a
5 ^a	0 ^a	Any ^a	7 ^a	37 ^a	2 ^a	Any ^a	7 ^a
6 ^a	0 ^a	Any ^a	1, 6 ^a	38 ^a	2 ^a	Any ^a	1, 6 ^a
7 ^a	0 ^a	Any ^a	2, 7 ^a	39 ^a	2 ^a	Any ^a	2, 7 ^a
8 ^a	0 ^a	Any ^a	3, 8 ^a	40 ^a	2 ^a	Any ^a	3, 8 ^a
9 ^a	0 ^a	Any ^a	1, 4, 7 ^a	41 ^a	2 ^a	Any ^a	1, 4, 7 ^a
10 ^a	0 ^a	Any ^a	2, 5, 8 ^a	42 ^a	2 ^a	Any ^a	2, 5, 8 ^a
11 ^a	0 ^a	Any ^a	3, 6, 9 ^a	43 ^a	2 ^a	Any ^a	3, 6, 9 ^a
12 ^a	0 ^a	Any ^a	0, 2, 4, 6, 8 ^a	44 ^a	2 ^a	Any ^a	0, 2, 4, 6, 8 ^a
13 ^a	0 ^a	Any ^a	1, 3, 5, 7, 9 ^a	45 ^a	2 ^a	Any ^a	1, 3, 5, 7, 9 ^a
14 ^a	0 ^a	Any ^a	0, 1, 2, 3, 4, 5, 6, 7, 8, 9 ^a	46 ^a	N/A ^a	N/A ^a	N/A ^a
15 ^a	0 ^a	Even ^a	9 ^a	47 ^a	2 ^a	Even ^a	9 ^a
16 ^a	1 ^a	Even ^a	1 ^a	48 ^a	3 ^a	Even ^a	1 ^a
17 ^a	1 ^a	Even ^a	4 ^a	49 ^a	3 ^a	Even ^a	4 ^a
18 ^a	1 ^a	Even ^a	7 ^a	50 ^a	3 ^a	Even ^a	7 ^a
19 ^a	1 ^a	Any ^a	1 ^a	51 ^a	3 ^a	Any ^a	1 ^a
20 ^a	1 ^a	Any ^a	4 ^a	52 ^a	3 ^a	Any ^a	4 ^a
21 ^a	1 ^a	Any ^a	7 ^a	53 ^a	3 ^a	Any ^a	7 ^a
22 ^a	1 ^a	Any ^a	1, 6 ^a	54 ^a	3 ^a	Any ^a	1, 6 ^a
23 ^a	1 ^a	Any ^a	2, 7 ^a	55 ^a	3 ^a	Any ^a	2, 7 ^a
24 ^a	1 ^a	Any ^a	3, 8 ^a	56 ^a	3 ^a	Any ^a	3, 8 ^a
25 ^a	1 ^a	Any ^a	1, 4, 7 ^a	57 ^a	3 ^a	Any ^a	1, 4, 7 ^a
26 ^a	1 ^a	Any ^a	2, 5, 8 ^a	58 ^a	3 ^a	Any ^a	2, 5, 8 ^a
27 ^a	1 ^a	Any ^a	3, 6, 9 ^a	59 ^a	3 ^a	Any ^a	3, 6, 9 ^a
28 ^a	1 ^a	Any ^a	0, 2, 4, 6, 8 ^a	60 ^a	N/A ^a	N/A ^a	N/A ^a
29 ^a	1 ^a	Any ^a	1, 3, 5, 7, 9 ^a	61 ^a	N/A ^a	N/A ^a	N/A ^a
30 ^a	N/A ^a	N/A ^a	N/A ^a	62 ^a	N/A ^a	N/A ^a	N/A ^a
31 ^a	1 ^a	Even ^a	9 ^a	63 ^a	3 ^a	Even ^a	9 ^a

Event



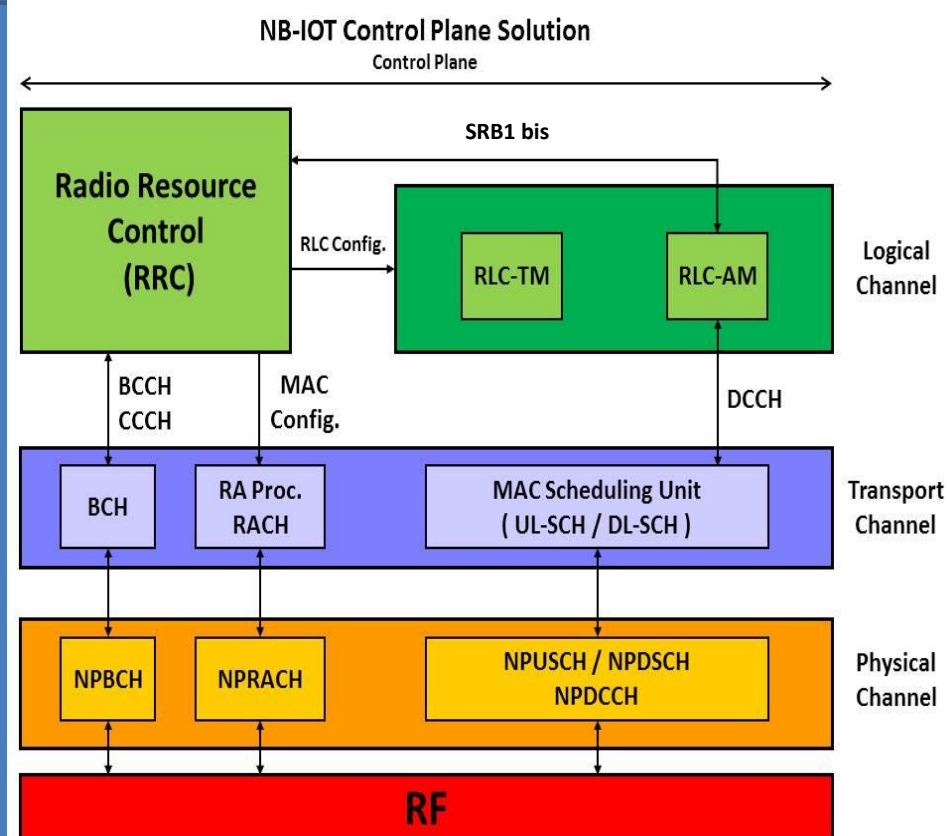
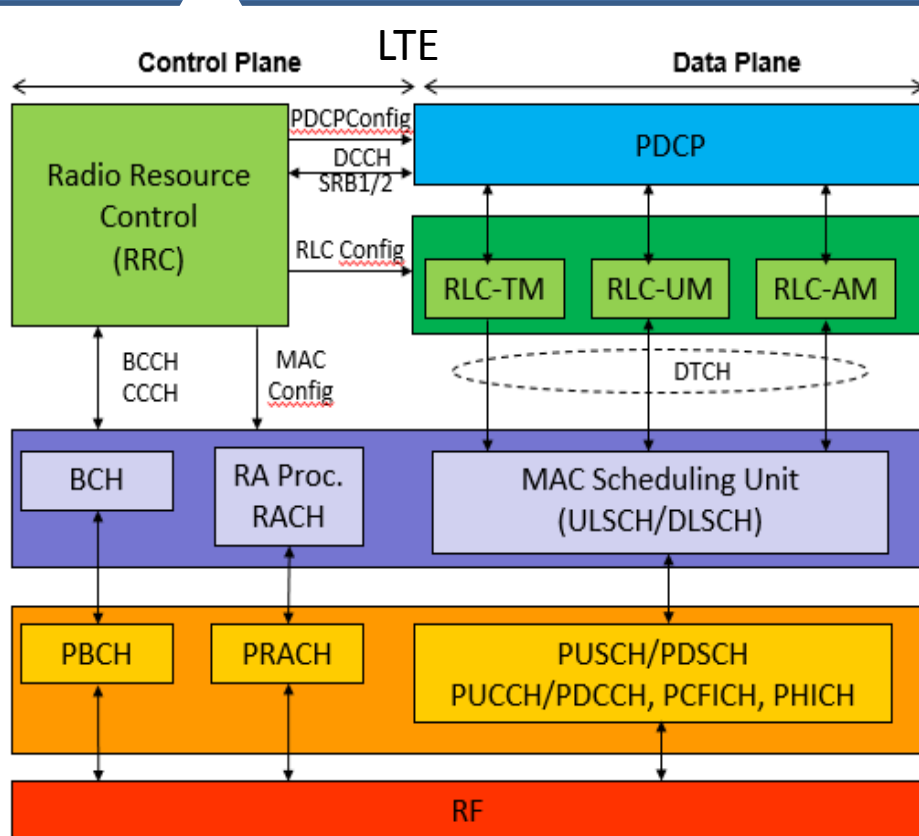
➔ [Re-use]SR_indication:

- Set UE is ready to be scheduled flag for Uplink scheduling.
- In NB-IoT, the control plane solution didn't use SR procedure, but user plane solution support.

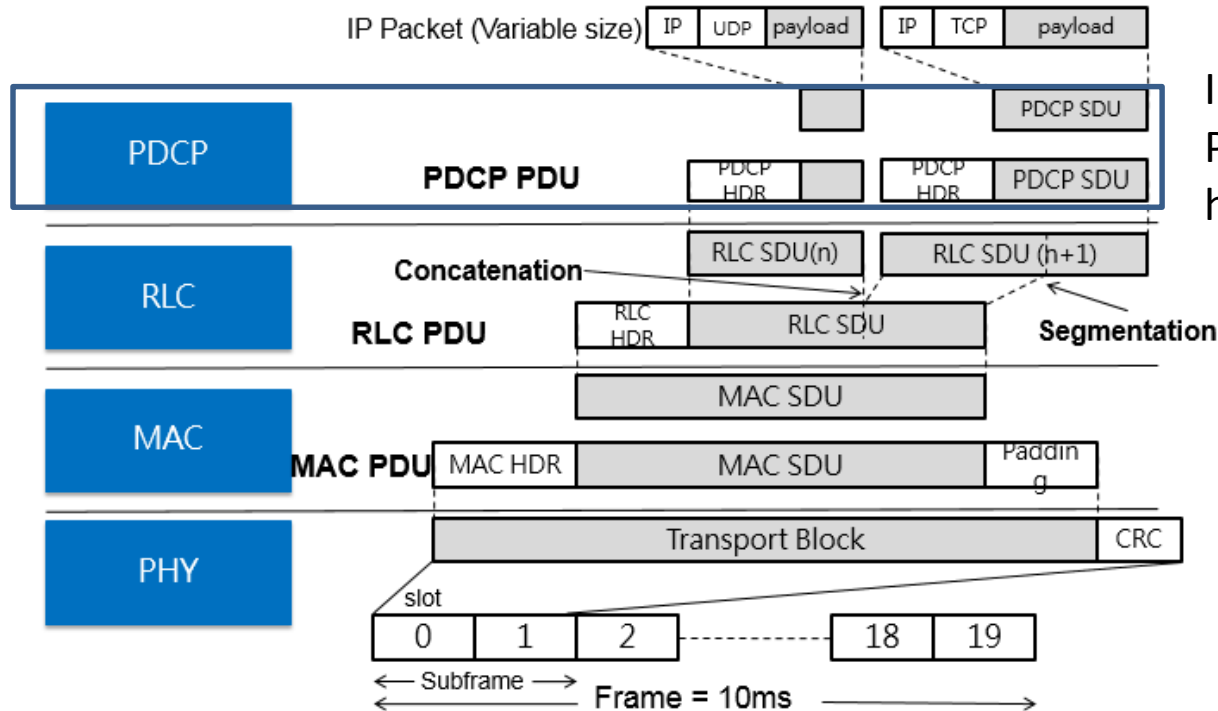
Outline

- ➡ eNB Layer 2 Interface for NB-IoT
 - MAC-RLC
 - MAC-RRC
- ➡ eNB MAC-PHY Interface
 - Random Access
 - Phy Config
 - Scheduling
 - Helper Function
 - Event
- ➡ Protocol for NB-IoT based on OAI
 - Protocol stack (LTE vs NB-IoT)
 - Packet structure
 - Downlink Packet Transfer
 - Uplink Packet Transfer
 - OAI MAC scheduler
- ➡ MAC System Overview & Modification Phase
 - System MAC
 - Partition OAI module & Primitives
 - Partition MAC Module in detail
 - Modification Phase from OAI to NB-IoT

Protocol stack (LTE vs NB-IoT)

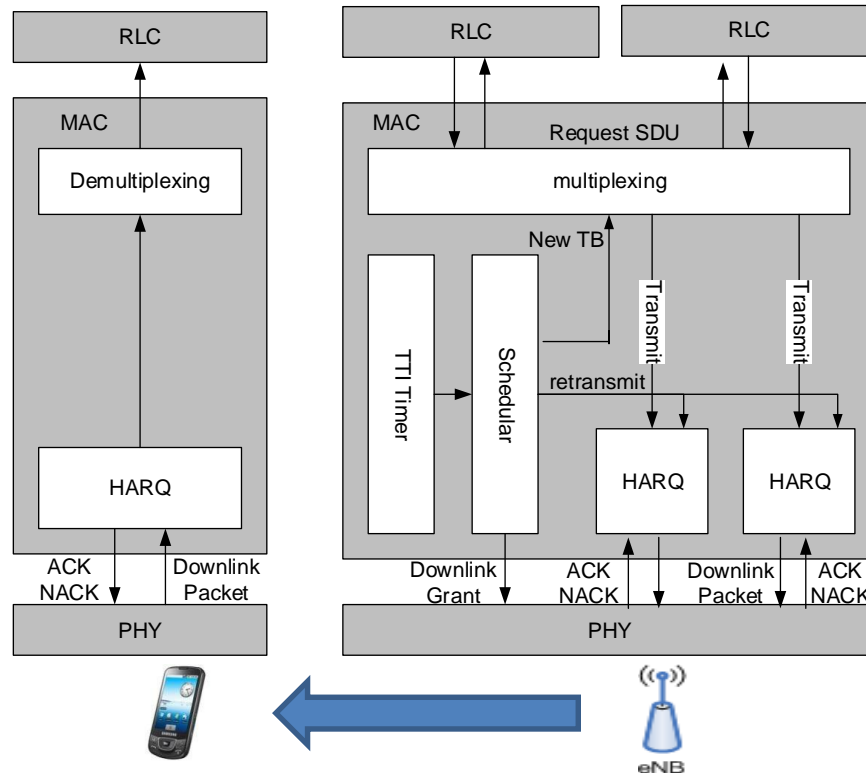


LTE packet structure



In NB-IoT Control Plane Solution, PDCP is just bypassing, not add header.

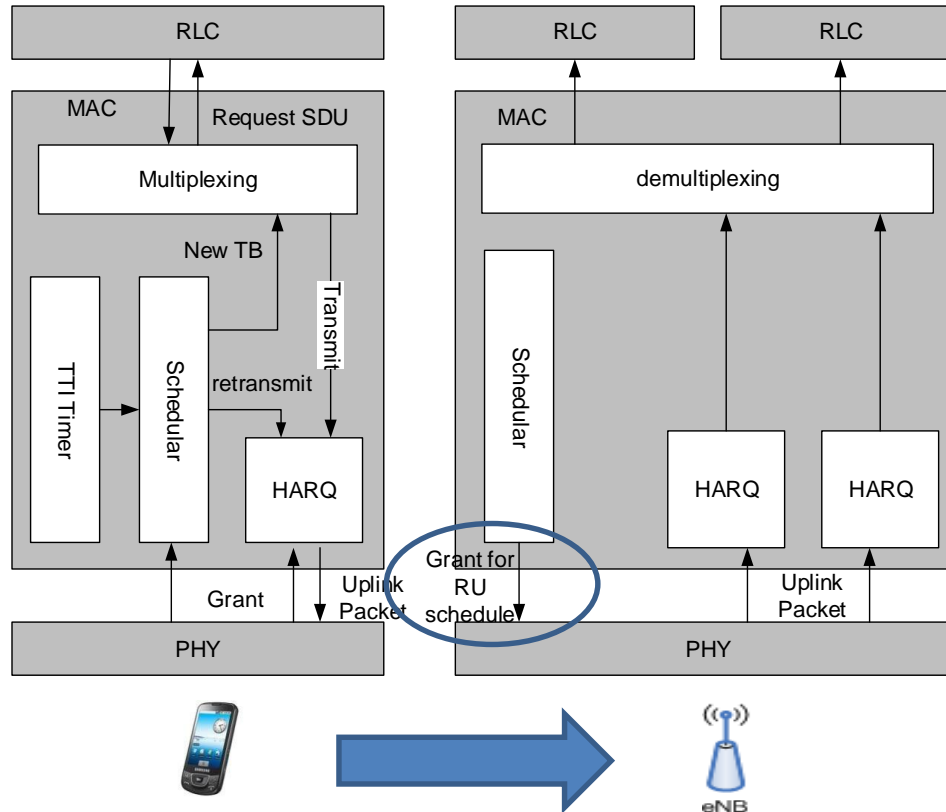
Downlink Packet Transfer



For NB-IoT:

1. In Downlink packet transmission, eNB use the new format of DCI to indicate UE the **resource allocation**, **repetition times**, resource and **delay for reporting ACK/NACK** and the **scheduling delay**.
2. Between the DCI and Downlink Packet, there is a **scheduling delay**.
3. Just use **NPUSCH** to report ACK NACK.

Uplink Packet Transfer

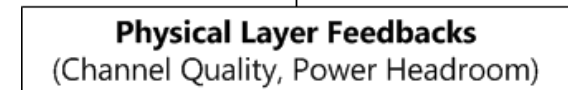
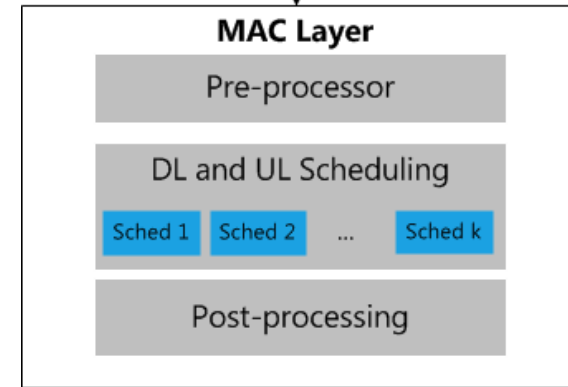
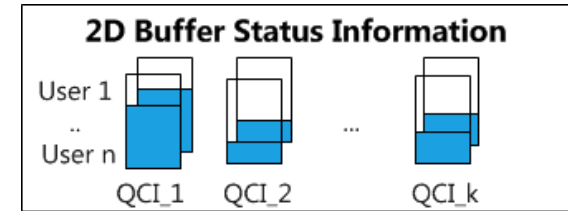
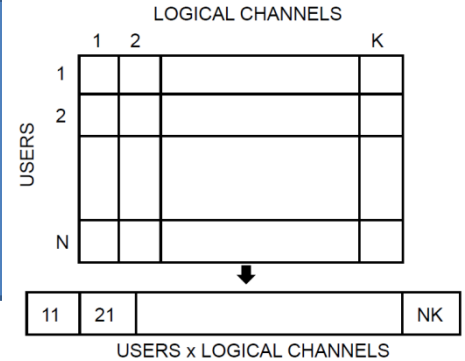


For NB-IoT:

1. In Uplink packet transmission, eNB use the new format of DCI to indicate UE the **resource allocation**, **repetition times** and the **scheduling delay**.
2. **Delete PHICH Channel**. When eNB decode data, **it won't report ACK/NACK**, but use the **NDI** field in DCI to indicate a new transmission or retransmission.
3. Use **Resource Unit (RU)** as a resource allocation Unit.
4. All the retransmission need control information(DCI).

OAI MAC scheduler

- ➔ **Preprocessor**
 - Converts two-dimensional buffer of users x logical channels into a single dimension as shown below
- ➔ **Scheduler**
 - Sorting of the blocks
- ➔ **Post-processor**
 - Converts the scheduling decision into the PHY format (i.e. DCI for LTE)
- ➔ **Resource allocation for NB-IoT**
 - Use just 1 PRB to allocate resource
 - Add scheduling delay due to the lower capability CPU
 - New format of DCI
 - Resource config between different CE level

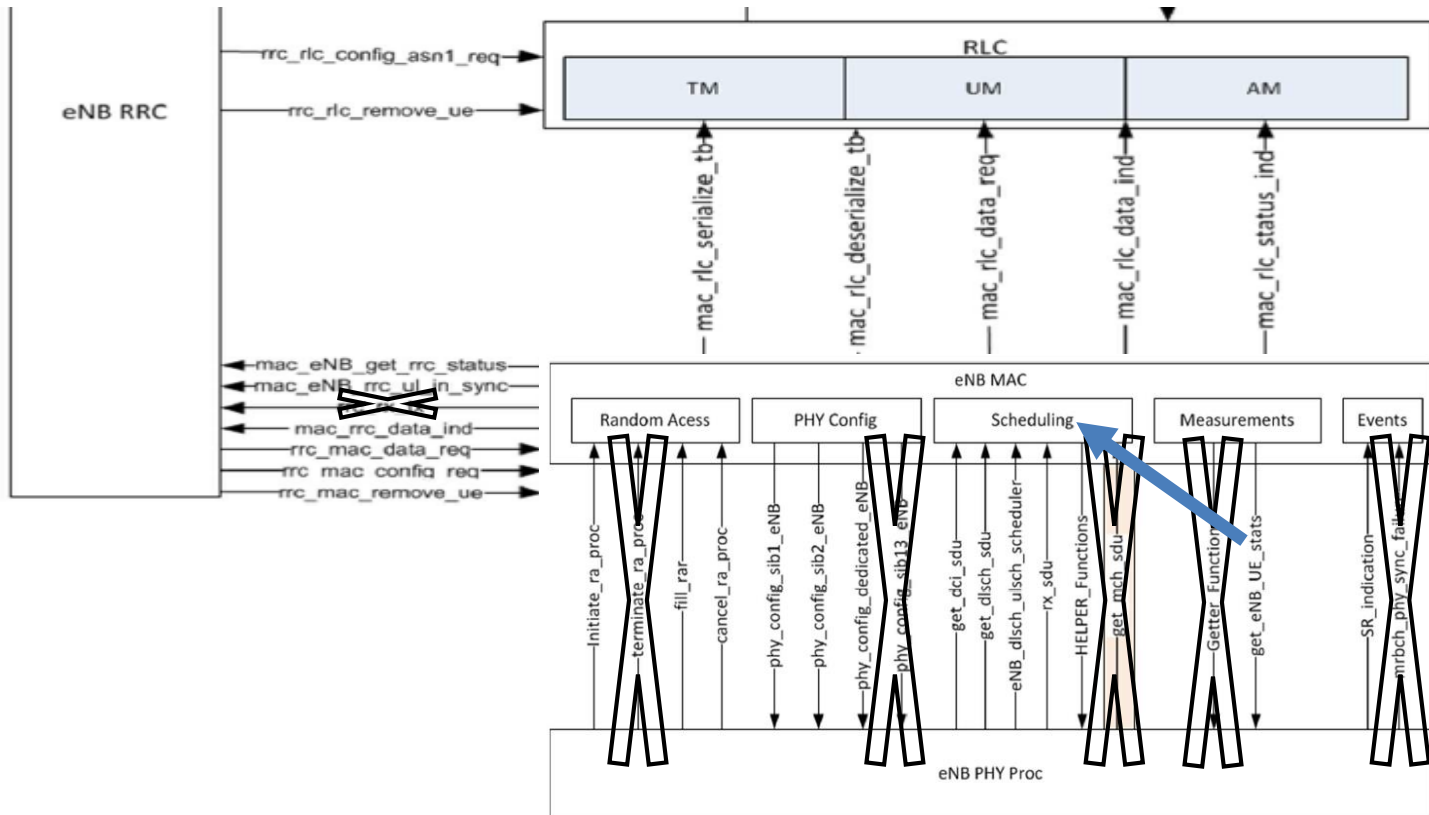


Outline

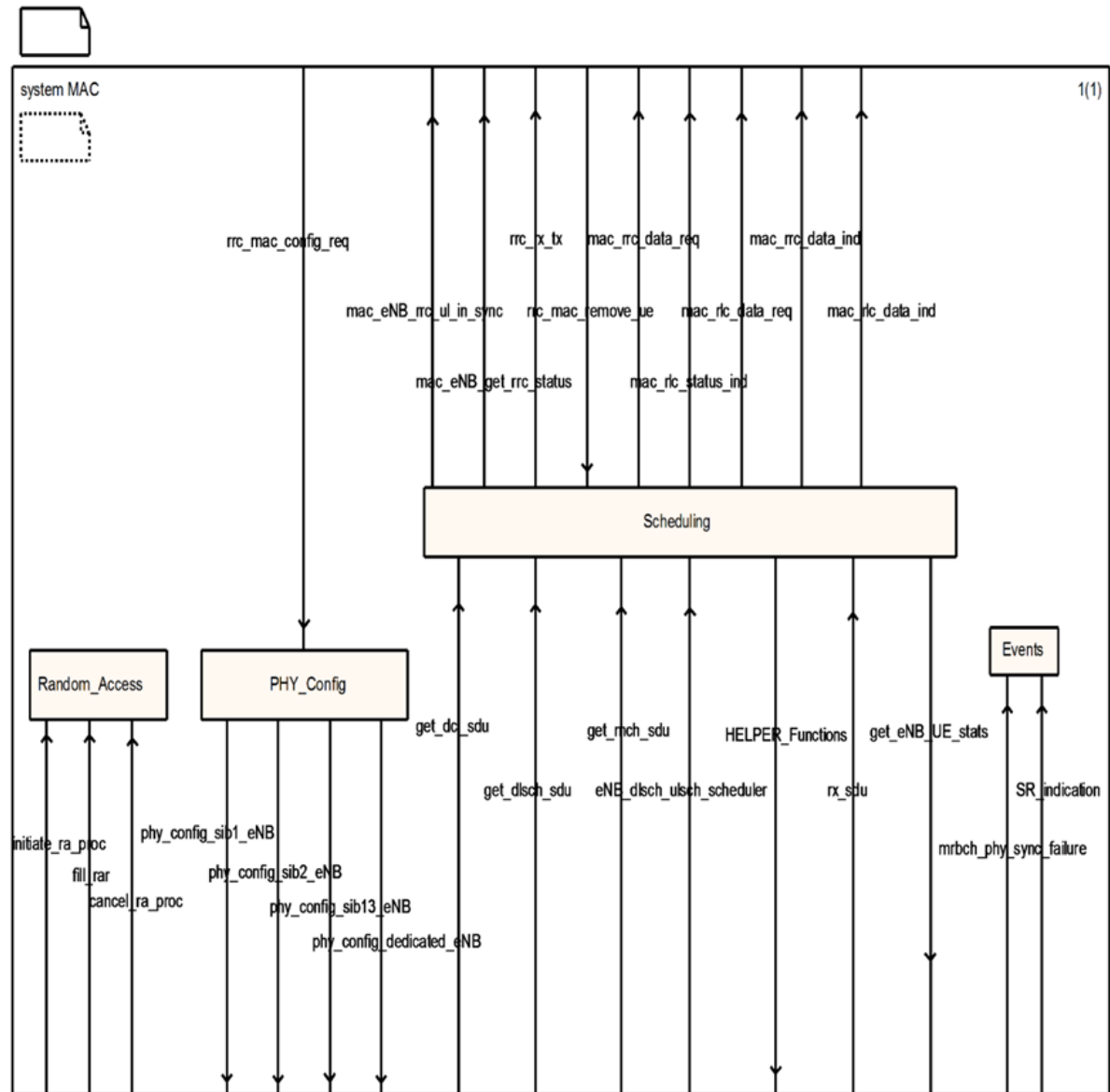
- ➡ eNB Layer 2 Interface for NB-IoT
 - MAC-RLC
 - MAC-RRC
- ➡ eNB MAC-PHY Interface
 - Random Access
 - Phy Config
 - Scheduling
 - Helper Function
 - Event
- ➡ Protocol for NB-IoT based on OAI
 - Protocol stack (LTE vs NB-IoT)
 - Packet structure
 - Downlink Packet Transfer
 - Uplink Packet Transfer
 - OAI MAC scheduler
- ➡ MAC System Overview & Modification Phase
 - System MAC
 - Partition OAI module & Primitives
 - Partition MAC Module in detail
 - Modification Phase from OAI to NB-IoT



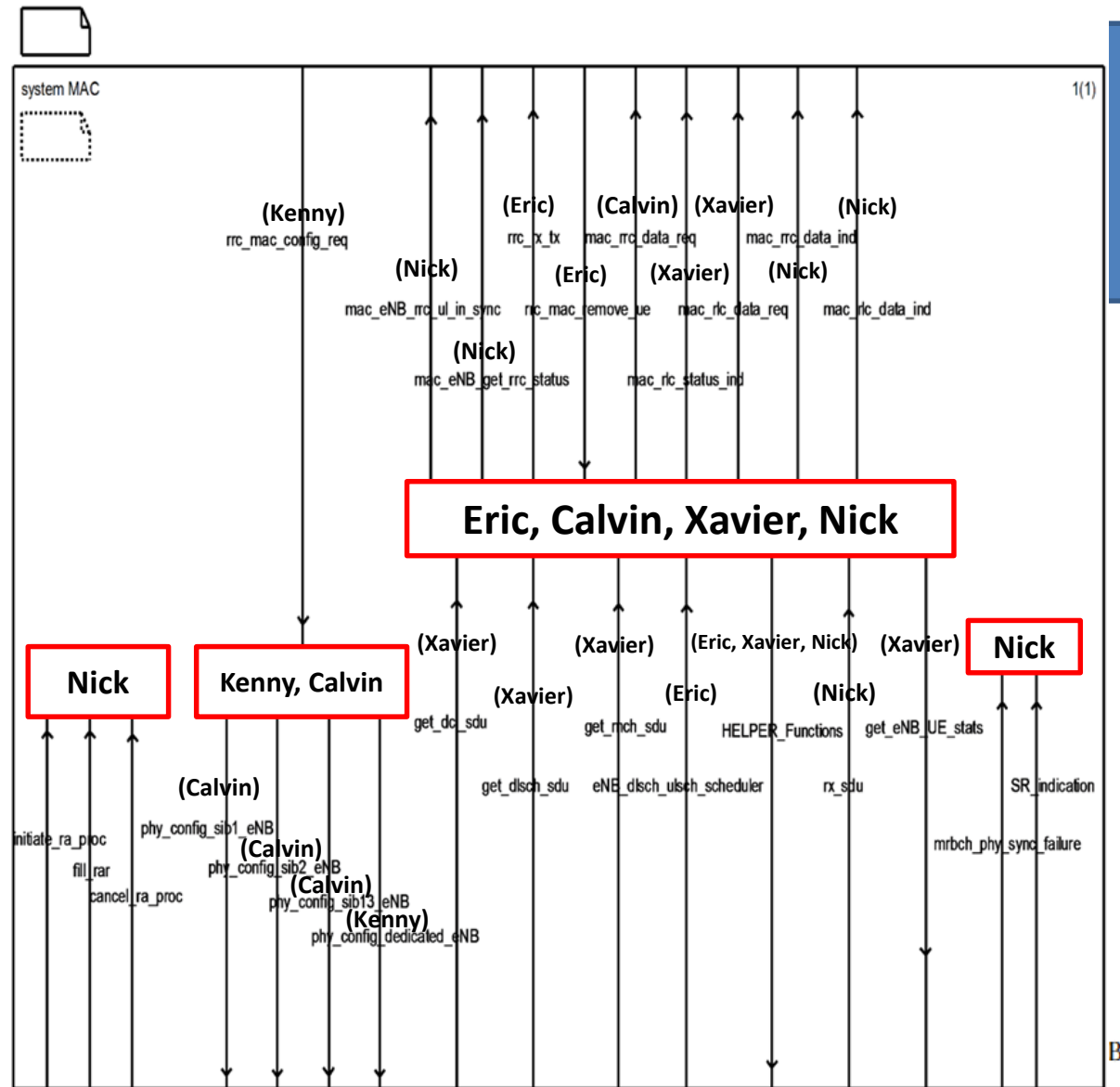
eNB layer 2 interface for NB-IoT



System MAC



Partition OAI module & Primitives



Partition MAC Module in detail

MAC Module	Sub-Module		Member in charge	Note
Scheduling	UL	UL Scheduling	Eric, Nick	N/A
		UL HARQ	Nick, Kenny	
		Msg3 procedure	Nick, Eric	
	DL	DL Scheduling	Xavier, Calvin	N/A
		DL HARQ	Xavier, Calvin	
		DCI for Msg2 and schedule Msg4	Calvin, Xavier	
Random Access	Msg1 and Msg2 procedure		Nick	N/A
PHY Config	RRC Config MAC&PHY procedure except for SIB		Kenny	N/A
	SIB Config MAC&PHY procedure		Kenny	
Events	SR procedure related to UL scheduling		Nick	N/A